

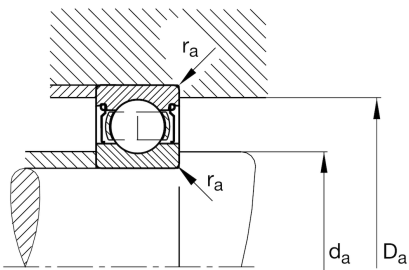
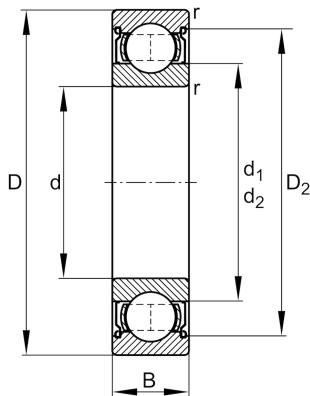
FAG

6003-2Z

Deep groove ball bearing

Schaeffler ID:
0167170400000Deep groove ball bearing 60...-2Z, single
row, shields, steel sheet metal cage

Technical information

**Dimensions**

r_{\min}	0.3 mm	Minimum chamfer dimension
D_2	30.8 mm	Caliber diameter outer ring
d_1	22.7 mm	Shoulder diameter inner ring
	39.5 g	Weight

Main Dimensions & Performance Data

d	17 mm	Bore diameter
D	35 mm	Outside diameter
B	10 mm	Width
C_r	6,400 N	Basic dynamic load rating, radial
C_{0r}	3,250 N	Basic static load rating, radial
C_{ur}	162 N	Fatigue load limit, radial
n_G	26,000 1/min	Limiting speed
n_{gr}	20,300 1/min	Reference speed

Mounting dimensions

$d_{a\min}$	19 mm	Minimum diameter shaft shoulder
$D_{a\max}$	33 mm	Maximum diameter of housing shoulder
$r_{a\max}$	0.3 mm	Maximum fillet radius

Calculation factors

f_0	14.3	Calculation factor
-------	------	--------------------

Temperature range

T_{\min}	-20 °C	Operating temperature min.
T_{\max}	120 °C	Operating temperature max.